



Carhartt® Storm Defender® Shoreline Jacket CT104670

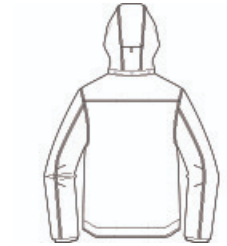


Our best-selling Shoreline Jacket has been updated.

- 7.3-ounce, 100% nylon oxford shell
- Storm Defender® waterproof, breathable technology
- Wind Fighter® technology tames wind
- 10K/10K waterproof/breathable protection rating
- Fully taped waterproof seams
- Polyester mesh lining
- Taffeta lining in sleeves and hood for easy on/off
- Adjustable, removable roll-away hood
- Full-zip front with inner and outer storm flaps
- Two interior pockets with hook and loop closures
- Left chest pocket with secure waterproof zipper and storm flap
- Two lower front pockets with zippered closures and storm flaps
- Adjustable cuffs with hook and loop closures and inner sleeve storm cuffs
- Adjustable drop tail hem
- Carhartt-strong, triple-stitched main seams
- Carhartt label sewn on chest pocket
- Loose fit



front

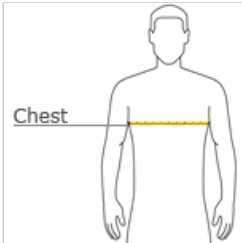


back

CARE INSTRUCTIONS

Close All Zippers. Machine Wash Warm Like Colors. Non-Chlorine Bleach. Tumble Dry Low. Do Not Use Fabric Softeners. Cool Iron. Do Not Dry Clean. Exclusive Trimming.

HOW TO MEASURE



CHEST WIDTH

Measure under the arm and around the fullest part of the chest with arms down, keeping tape horizontal.

SIZE CHART

	S	M	L	XL	2XL	3XL	4XL
Chest	34-36	38-40	42-44	46-48	50-52	54-56	58-60

COLOR INFORMATION



Black
PMS BLACK C



Moss
PMS 7770C



Navy
PMS 533C



Shadow Grey
PMS 7540C